

AJP-SC72 Series Mono-Crystalline Photovoltaic Modules

* High Efficiency

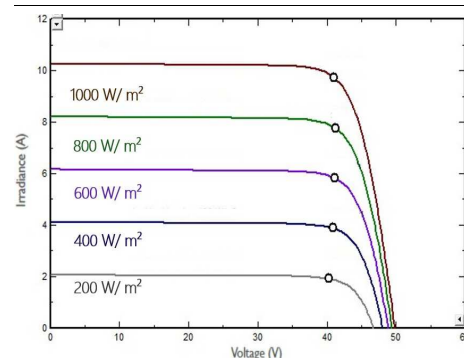
Electrical Performance @ STC^{*1}

Maximum Power	Pmax[Wp]	390	395	400
Power Tolerance ^{*2}			+0%~3%	
Solar Cell Type		Mono-crystalline 6"		
Number of Solar Cells		72 (6 x 12)		
Maximum Power Voltage	Vmp[V]	40.37	40.73	41.15
Maximum Power Current	Imp[A]	9.66	9.70	9.72
Open Circuit Voltage	Voc[V]	49.38	49.6	49.82
Short Circuit Current	Isc[A]	10.10	10.18	10.27
Module Efficiency	[%]	19.67%	19.92%	20.17%

*1 STC: Irradiance level 1000 W/m²; Spectral AM1.5; Temperature 25°C

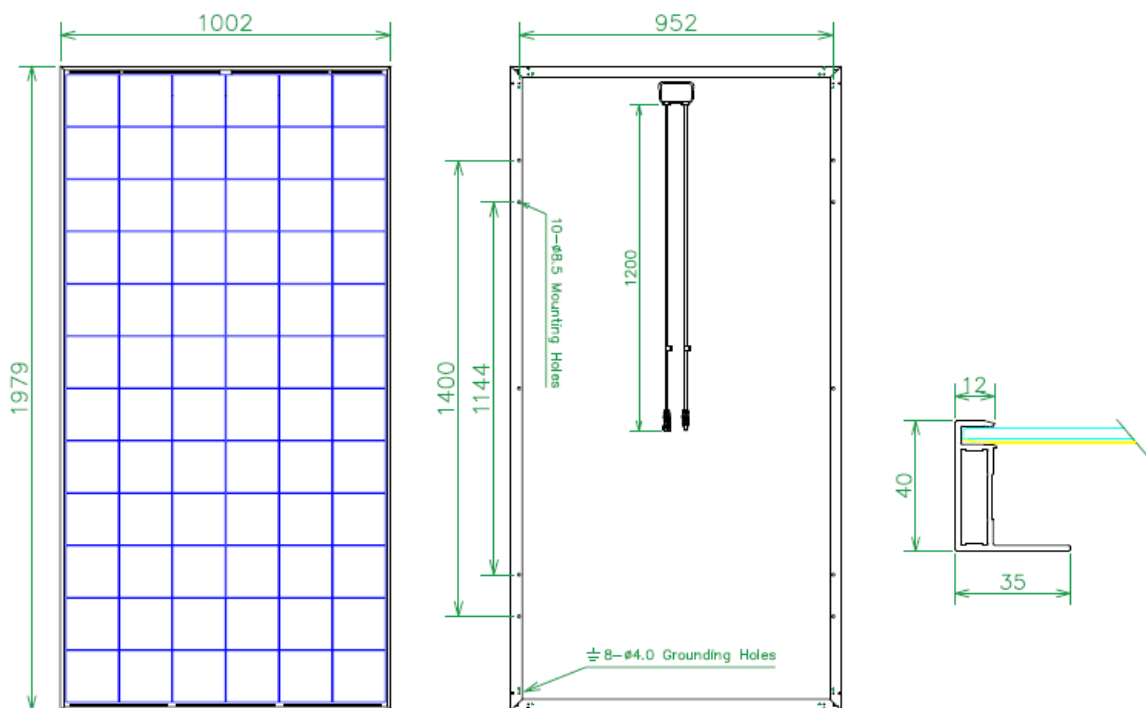
*2 Power tolerance can be adjusted upon requests

IV Curve



Mechanical Characteristics

Dimensions of the Module (W×H×D)(mm)	1979X1002X40
Weight of the Module(kg)	23
Junction box	IP 68 or above with 3 bypass diodes ; cables 1.2M/φ 4mm ²
Series fuse rating Inside Junction Box	15A



Warranty

Product Warranty:
10 years for material and workmanship

Performance Guarantee:

90% for 10 years Guaranteed output
80% for 25 years Guaranteed output

Working Condition

Maximum System Voltage: 1500V
Operating Temperature: -40 ~ 85°C
Maximum Static Load: Snow load 5400pa
Wind load 3600pa

Temperature Coefficient

Isc Temperature Coefficient: α (%/°C) +0.05
Voc Temperature Coefficient: β (%/°C) -0.31
Pmax Temperature Coefficient: γ (%/°C) -0.40

Certificate



2020.4 Effective



Packing Configuration

Container	20'GP	40'HQ
Pieces per pallet	52	26
Pallets per container	5	24
Pieces per container	260	624

Anji Technology Co., LTD

No.19 Keji 5th Road, Annan District, Tainan 709015, Taiwan
Tel: +886 6 5105988 Fax: +886 6 510 5989

E-mail: service@anjitek.com

* Specification are subject to change without notice

web-link: www.anjitek.com

